

Introduction

The TS2-C is a 2kW timer and part of a family of controllers designed to provide energy saving when used with Quartz Infrared Halogen Lamps or other Heating and Lighting Products. The 'T' model switches the lamps on for a pre-determined time period of between 5 and 60 seconds.

The microcontroller-based unit incorporates zero-voltage switching and a soft-start function to eliminate the lamps' initial high inrush current – potentially increasing lamp life by as much as 30%. Installation of the unit is simple and once installed is relatively maintenance-free.

Applications:

patio areas, smoking shelters, restaurants, warehouses, workshops and garden lighting.

Installation

Important: Read carefully the following information before installing the unit.

The TS2-C should be fixed securely using the four mounting holes accessible from the front of the unit. Remove the lid to access the mounting holes.

IMPORTANT! The unit must be orientated with the cable glands facing down.

Wiring

It is recommended that installation and maintenance of this equipment should be done with reference to the current edition of the I.E.E. wiring regulations (BS7671) by suitably qualified/trained personnel. These regulations contain important requirements regarding safety of electrical equipment (for International Standards refer to I.E.C/ directive IEC950).

Warning! Isolate the mains supply before commencing any work on this unit. Ensure all earth wires are connected to maintain earth continuity to the lamp fittings.

The unit is fitted with two cable glands. Only one cable should be fitted per gland to prevent degrading the unit's IP rating. When fitting two lamps it is recommended that a junction box is used.

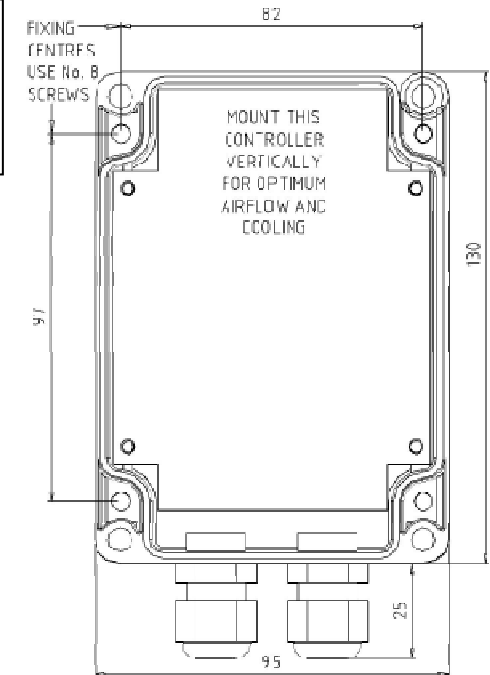
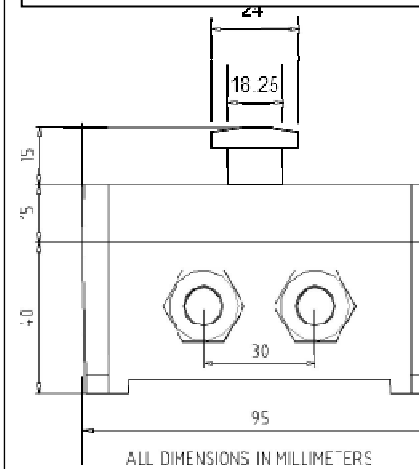
The mains supply connects to the terminal block marked 'LINE'. Connect the supply **LIVE** to the 'L' terminal, **NEUTRAL** to the 'N' terminal and **EARTH** to the 'E' terminal.

The lamps connect to the terminal block marked 'LOAD'. Connect the load **LIVE** to the 'L' terminal, **NEUTRAL** to the 'N' terminal and **EARTH** to the 'E' terminal. If two lamps are to be fitted they must be wired in parallel. Check all wiring and make sure the cable glands are tightened.

Mounting Template

IMPORTANT!

Drilling of any holes through the enclosure will immediately invalidate the warranty of the unit. The unit **MUST** be orientated with the cable glands facing down.



Technical Specification

Supply Voltage	230VAC +/- 10%
Supply Frequency	50 Hz
Switching Capacity	2kW Max.
Lamp On-Time	5 to 60 seconds
Current Consumption (control circuit)	50mA
Terminals	2.5mm ² Rising Clamp
Operating Temperature	-20 to 40°C
Protection Rating	IP55
Gland Diameter	Max Cable Entry 2.5mm ²
Fixings	4 x 3.5Ø holes 97 x 82mm centres



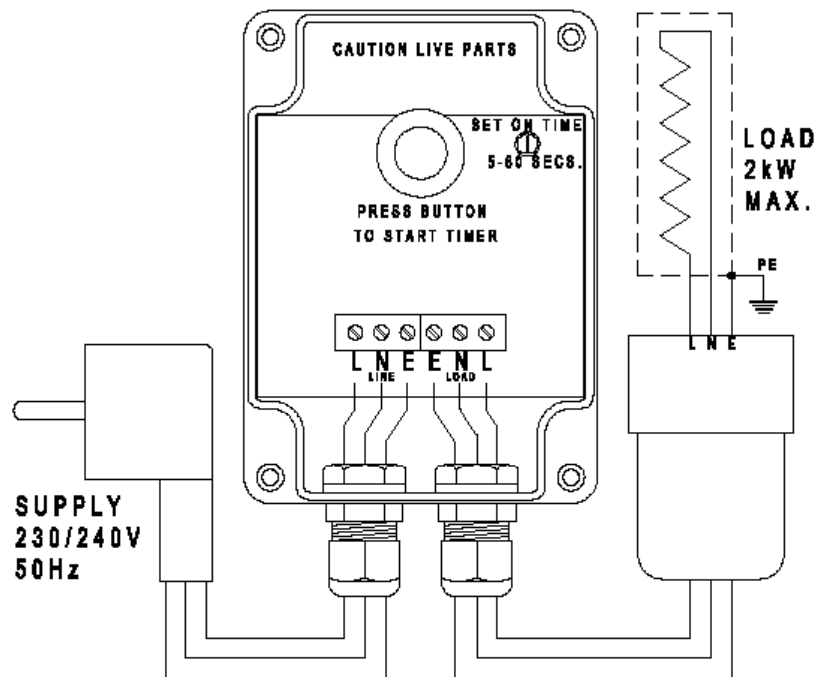
Not for general waste

RoHS
COMPLIANT

Commissioning

Set the on-time preset to a time period of between 5 and 60 seconds. The cermet is located at the top of the printed circuit board as shown below. Replace the lid and switch on the mains supply to the unit. Press the push-button on the front of the unit to switch the lamps on.

Wiring Diagram



TS2-C INSTRUCTIONS FOR USE



Subject to errors and technical changes

Burda Worldwide Technologies GmbH – Rudolf-Diesel Straße 18 – D-65760 Eschborn
T: +49 6173 324240 - F:+49 6173 3242424 - info@burdawtg.de – www.burdawtg.com